

WE PROVIDE SOLUTIONS TO THE NEEDS OF OUR CUSTOMERS

EST 1959

# PATTON'S

METAL WORKING SOLUTIONS



## STOCK LIST & BUYER'S GUIDE



**STEEL • PIPE • ALUMINUM • SHAPES • ORNAMENTAL**

# PATTON'S

## METAL WORKING SOLUTIONS



ONTARIO • SAN BERNARDINO • IRWINDALE • PALMDALE • HESPERIA • BURBANK • BAKERSFIELD

**800.792.9762 • WWW.PATTONSCORP.COM**

FOR FIVE DECADES, PATTON'S HAS CONTINUED TO GROW AND EVOLVE IN THE SOUTHERN CALIFORNIA MARKET AND CONTINUES TO BE THE LEADER IN THE STEEL SERVICE CENTER INDUSTRY.

FAMILY OWNED AND OPERATED, SINCE 1959, PATTON'S NOW HAS SEVEN SOUTHERN CALIFORNIA LOCATIONS, WITH FACILITIES IN ONTARIO, SAN BERNARDINO, IRWINDALE, PALMDALE, HESPERIA, BURBANK & IT'S NEWEST LOCATION IN BAKERSFIELD. PLUS PATTON'S HAS A 65,000 SQUARE FOOT DISTRIBUTION CENTER & CORPORATE OFFICES IN ONTARIO, CALIFORNIA.

SEE HOW PATTON'S HAS THE SELECTION, AVAILABILITY, STRENGTH & RELIABILITY WHEN AND WHERE YOU NEED IT

**STEEL • PIPE • ALUMINUM • SHAPES • STRUCTURAL • ORNAMENTAL**

### COMMON DECIMAL EQUIVALENTS

1/64" = .0156	3/8" = .375
1/32" = .0312	7/16" = .4375
1/16" = .0625	1/2" = .500
3/32" = .0937	9/16" = .5625
1/8" = .125	5/8" = .625
3/16" = .1875	11/16" = .6875
7/32" = .2187	3/4" = .750
1/4" = .250	13/16" = .8125
9/32" = .2812	7/8" = .875
5/16" = .3125	15/16" = .9375

### HELPFUL HINTS FROM PATTONS

TUBING (ROUND, SQUARE OR RECTANGULAR) IS MEASURED FROM THE OUTER DIAMETER OR SIDE OF MATERIAL

PIPE (STANDARD, GALVANIZED OR ALUMINUM) IS MEASURED FROM THE INNER DIAMETER

ORNAMENTAL TUBING IS TYPICALLY TUBING WITH .049 OR .060 WALL THICKNESS

STRUCTURAL BEAMS ARE MEASURED BY THEIR DEPTH (TOP TO BOTTOM HEIGHT) AND WEIGHT PER FOOT (I.E., W8X15 IS AN 8" BEAM THAT WEIGHS 15 POUNDS PER FOOT)

STRUCTURAL CHANNEL IS MEASURED BY THEIR DEPTH (TOP TO BOTTOM HEIGHT) AND THE WEIGHT PER FOOT (I.E., C3X4.1 IS A 3" CHANNEL THAT WEIGHS 4.1 POUNDS PER FOOT)

### STEEL SHEETS

### GALVANIZED SHEETS

GAUGE	THICKNESS TOLERANCE	WEIGHT/ SQ FOOT	THICKNESS/ TOLERANCE	WEIGHT/ SQ FOOT
10	.1425 .1265	5.625	.1472 .1292	5.781
11	.1276 .1116	5.000	.1323 .1143	5.156
12	.1126 .0966	4.375	.1323 .1143	4.531
13	.0967 .0827	3.750	.1174 .0994	3.906
14	.0817 .0677	3.125	.1014 .0854	3.281
16	.0658 .0538	2.500	.0865 .0705	2.656
18	.0528 .0428	2.000	.0566 .0466	2.156
20	.0389 .0329	1.500	.0436 .0356	1.656
22	.0329 .0269	1.250	.0376 .0296	1.406
24	.0269 .0209	1.000	.0316 .0236	1.156
26	.0199 .0159	0.750	.0247 .0187	0.906
28	.0169 .0129	0.625	.0217 .0157	0.781

## PATTON'S SERVICES INCLUDE

### 24-HOUR COMPLETE IN-HOUSE PROCESSING

- BANDSAW CUTTING
- IRONWORKING
- FLAME CUTTING
- PLASMA CUTTING
- BURNING
- BENDING
- BREAKING
- CUTTING TO LENGTH
- PUNCHING
- SAWING
- SHAPE CUTTING
- SHEARING

WITH OVER 50 YEARS OF PROCESSING EXPERIENCE, PATTON'S OFFERS HIGH- QUALITY SERVICES OPERATING NUMEROUS TYPES OF METAL-SHAPING EQUIPMENT DESIGNED TO MEET THE MOST STRINGENT REQUIREMENTS OF OUR CUSTOMERS

# TABLE OF CONTENTS

## SECTION I

CARBON STEEL, GALVANIZED, GRATING & GRIP STRUT, EXPANDED & PERFORATED SHEET, AND PRE-CUT MATERIALS	5
TUBING	
SQUARE TUBE .....	6 - 8
RECTANGULAR TUBE .....	9 - 12
ROUND TUBE .....	13 - 14
PIPE .....	15
ANGLE	
EQUAL LEGS .....	16 - 17
UNEQUAL LEGS .....	18 - 19
CHANNEL .....	20
JUNIOR & MISCELLANEOUS CHANNEL .....	21
BEAM	
WIDE FLANGE BEAM .....	22 - 24
STANDARD BEAM .....	25
JUNIOR & MISCELLANEOUS BEAM .....	26
SHAPES	
FLAT BAR	27 - 30
SQUARE & ROUND BAR	31
SHEET & PLATE	
HOT ROLL SHEET	32
GALVANIZED SHEET	33
COLD ROLL SHEET	34
A-36 HOT ROLL PLATE	35 - 36
DIAMOND PLATE	37
GRATING & GRIP STRUT	38
EXPANDED & PERFORATED SHEET	39
PRE-CUT PLATE & SHEET AND BASE PLATES	40

## SECTION II

ALUMINUM, COLD ROLL, STAINLESS STEEL, D.O.M & CHROMOLY TUBING	41
ALUMINUM	
5052 SHEET & PLATE	42
6061 SHEET & PLATE	43
TREAD-BRITE & 6061 DIAMOND PLATE	44
SQUARE, RECTANGULAR & ROUND TUBING	45
PIPE	46
CHANNEL	46
ANGLE	47
FLAT BAR	48 - 49
SQUARE BAR	50
ROUND BAR	50
COLD ROLL	
FLAT BAR	51 - 52
SQUARE BAR	53
ROUND BAR	54
STAINLESS	
SHEET	55
FLAT BAR	56
D.O.M & CHROMOLY TUBING	57

## SECTION I

# CARBON STEEL

TUBING • PIPE • ANGLE • CHANNEL  
BEAM • SHAPES • HOT ROLL & COLD ROLL SHEET • PLATE

# GALVANIZED SHEET

# GRATING & GRIP STRUT

# EXPANDED & PERFORATED SHEET

# PRE-CUT SHEET & PLATE

# SQUARE TUBING



## ASTM A-500 • A-36 SQUARE TUBE

DIMENSIONS				WALL THICKNESS	LBS/FOOT
1/2	X	1/2	X	.049	.3005
			X	.060	.3845
5/8	X	5/8	X	.049	.3838
			X	.060	.4950
3/4	X	3/4	X	.049	.4671
			X	.060	.6055
			X	.083	.7530
			X	.090	.8563
			X	.120	1.020
7/8	X	7/8	X	.049	.5504
			X	.060	.7160
1	X	1	X	.049	.6337
			X	.060	.8270
			X	.075	.9090
			X	.083	1.035
			X	.090	1.169
			X	.120	1.436
1-1/4	X	1-1/4	X	.049	.8000
			X	.060	1.047
			X	.075	1.110
			X	.083	1.317
			X	.090	1.443
			X	.120	1.844
1-1/2	X	1-1/2	X	.049	.9670
			X	.060	1.268
			X	.075	1.350
			X	.083	1.600
			X	.090	1.815
			X	.120	2.252
1-1/2	X	1-1/2	X	.188	3.350
			X	.250	4.250

PATTON'S TYPICALLY STOCKS 20' & 24' LENGTHS OF TUBE, WHICH ARE INDUSTRY STANDARD LENGTHS

PLEASE LET US KNOW IF YOU NEED A SIZE OTHER THAN LISTED ABOVE

**PRODUCTS ARE SUBJECT TO AVAILABILITY OR SPECIAL ORDERING**



# SQUARE TUBING



## ASTM A-500 • A-36 SQUARE TUBE

DIMENSIONS				WALL THICKNESS	LBS/FOOT
1-3/4	X	1-3/4	X	.060	1.490
			X	.090	2.138
			X	.120	2.660
2	X	2	X	.060	1.710
			X	.075	1.850
			X	.083	2.164
			X	.090	2.316
			X	.120	3.068
			X	.188	4.432
2-1/2	X	2-1/2	X	.250	5.410
			X	.120	3.910
			X	.188	5.610
3	X	3	X	.250	7.110
			X	.060	2.594
			X	.083	3.292
3-1/2	X	3-1/2	X	.090	3.753
			X	.120	4.700
			X	.188	6.870
			X	.250	8.810
			X	.120	5.516
			X	.188	8.150
4	X	4	X	.250	10.510
			X	.083	4.422
			X	.120	6.330
4-1/2	X	4-1/2	X	.188	10.700
			X	.250	13.910
			X	.188	12.210
			X	.375	17.270
4-1/2	X	4-1/2	X	.500	21.630

PATTON'S TYPICALLY STOCKS 20' & 24' LENGTHS OF TUBE, WHICH ARE INDUSTRY STANDARD LENGTHS

PLEASE LET US KNOW IF YOU NEED A SIZE OTHER THAN LISTED ABOVE

**PRODUCTS ARE SUBJECT TO AVAILABILITY OR SPECIAL ORDERING**



# SQUARE TUBING



## ASTM A-500 • A-36 SQUARE TUBING

DIMENSIONS				WALL THICKNESS	LBS/FOOT
5	X	5	X	.188	11.970
			X	.250	15.620
			X	.375	22.370
6	X	6	X	.188	14.560
			X	.250	19.020
			X	.375	27.480
			X	.500	35.240
7	X	7	X	.188	17.130
			X	.250	22.420
			X	.500	42.050
8	X	8	X	.250	25.820
			X	.500	48.850
10	X	10	X	.250	32.630
			X	.375	47.900
			X	.500	62.460
12	X	12	X	.250	39.440
			X	.375	58.100
			X	.500	76.070
14	X	14	X	.250	45.830
			X	.500	90.770
16	X	16	X	.250	52.630
			X	.500	104.030

PATTON'S TYPICALLY STOCKS 20' & 24' LENGTHS OF TUBE, WHICH ARE INDUSTRY STANDARD LENGTHS

PLEASE LET US KNOW IF YOU NEED A SIZE OTHER THAN LISTED ABOVE

**PRODUCTS ARE SUBJECT TO AVAILABILITY OR SPECIAL ORDERING**



# RECTANGULAR TUBING



## ASTM A-500 • A36 RECTANGULAR TUBE

DIMENSIONS				WALL THICKNESS	LBS/FOOT
1/2	X	1	X	.060	.5520
1/2	X	1-1/2	X	.060	.7630
3/4	X	1-1/2	X	.060	.8790
				.075	1.087
				.120	1.640
1	X	1-1/2	X	.049	.8070
				.060	.9810
				.090	1.490
				.120	1.844
1	X	2	X	.060	1.163
				.075	1.442
				.083	1.589
				.090	1.716
1	X	3	X	.120	2.252
				.060	1.564
				.075	2.000
1	X	4	X	.083	2.164
				.090	2.461
				.120	3.050
1	X	4	X	.060	1.964
				.120	3.884
1-1/2	X	2	X	.060	1.400
				.090	2.138
				.120	2.660
1-1/2	X	2-1/2	X	.060	1.564
				.083	2.164
				.120	3.068
				.188	4.490

PATTON'S TYPICALLY STOCKS 20' & 24' LENGTHS OF TUBE, WHICH ARE INDUSTRY STANDARD LENGTHS

PLEASE LET US KNOW IF YOU NEED A SIZE OTHER THAN LISTED ABOVE

**PRODUCTS ARE SUBJECT TO AVAILABILITY OR SPECIAL ORDERING**





# RECTANGULAR TUBING



## ASTM A-500 • A36 RECTANGULAR TUBE

DIMENSIONS				WALL THICKNESS	LBS/FOOT
1-1/2	X	3	X	.060	1.750
				.090	2.784
				.120	3.476
				.188	5.070
1-1/2	X	4	X	.083	3.011
				.120	4.292
2	X	3	X	.060	2.150
				.090	3.107
				.120	3.884
				.188	5.590
				.250	7.110
2	X	4	X	.060	2.595
				.120	4.700
				.188	6.870
				.250	8.810
2	X	5	X	.120	5.516
				.188	8.150
				.250	10.51
				.312	12.70
2	X	6	X	.083	4.420
				.120	6.210
				.188	9.420
				.250	12.21
2	X	8	X	.188	11.97
				.250	15.62
2	X	10		.188	14.53
				.250	19.02
2-1/2	X	3-1/2		.188	6.903

PATTON'S TYPICALLY STOCKS 20' & 24' LENGTHS OF TUBE, WHICH ARE INDUSTRY STANDARD LENGTHS

PLEASE LET US KNOW IF YOU NEED A SIZE OTHER THAN LISTED ABOVE

**PRODUCTS ARE SUBJECT TO AVAILABILITY OR SPECIAL ORDERING**



# RECTANGULAR TUBING



## ASTM A-500 • A36 RECTANGULAR TUBE

DIMENSIONS				WALL THICKNESS	LBS/FOOT
3	X	4	X	.120	5.516
				.188	8.150
				.250	10.51
				.312	12.70
3	X	5	X	.120	6.330
				.188	9.420
				.250	12.21
				.312	14.83
3	X	6	X	.120	7.148
				.188	10.70
				.250	13.91
				.375	19.82
3	X	8		.188	13.25
				.250	17.32
				.375	24.93

**PATTON'S... WE PROVIDE SOLUTIONS TO THE NEEDS OF OUR CUSTOMERS**

**SINCE 1959**

For five decades, Patton's has continued to grow and evolve in the Southern California market and continues to be the leader in the Steel Service Center industry, since 1959. Family owned and operated, Patton's now has seven Southern California locations, with facilities in Ontario, San Bernardino, Hesperia, Irwindale, Burbank, Palmdale, & our newest store in Bakersfield. Plus Patton's has a 65,000 square foot Distribution Center & Corporate Offices in Ontario, California.

PATTON'S TYPICALLY STOCKS 20' & 24' LENGTHS OF TUBE, WHICH ARE INDUSTRY STANDARD LENGTHS

PLEASE LET US KNOW IF YOU NEED A SIZE OTHER THAN LISTED ABOVE

**PRODUCTS ARE SUBJECT TO AVAILABILITY OR SPECIAL ORDERING**



# RECTANGULAR TUBING



## ASTM A-500 • A36 RECTANGULAR TUBE

DIMENSIONS				WALL THICKNESS	LBS/FOOT
4	X	5	X	.188	10.70
				.250	13.91
4	X	6	X	.120	8.200
				.188	11.97
				.250	15.60
				.375	22.37
4	X	8	X	.500	28.40
				.188	14.53
				.250	19.02
				.375	27.48
4	X	10	X	.500	35.24
				.188	17.08
				.250	22.42
				.313	27.59
4	X	12	X	.375	32.58
				.250	25.82
				.375	37.69
				.500	42.05
5	X	10	X	.250	24.12
				.375	34.27
6	X	8	X	.250	22.42
				.375	32.58
				.500	42.05
6	X	10	X	.188	19.65
				.250	25.82
8	X	10	X	.375	42.79
				.500	55.65

PATTON'S TYPICALLY STOCKS 20' & 24' LENGTHS OF TUBE, WHICH ARE INDUSTRY STANDARD LENGTHS

PLEASE LET US KNOW IF YOU NEED A SIZE OTHER THAN LISTED ABOVE

**PRODUCTS ARE SUBJECT TO AVAILABILITY OR SPECIAL ORDERING**



# ROUND TUBING



## ASTM A-500 • A36 ROUND TUBE

DIMENSIONS		WALL THICKNESS	LBS/FOOT
1/2"	X	.049	.2360
	X	.060	.2850
5/8"	X	.049	.3015
	X	.060	.3650
3/4"	X	.049	.3668
		.060	.4620
		.075	.5405
		.090	.6646
7/8"	X	.049	.4323
		.065	.5623
		.075	.6410
1"	X	.049	.4977
		.060	.6280
		.083	.8129
		.090	.9182
		.120	1.128
1-1/8"	X	.060	.7010
		.049	.6285
1-1/4"	X	.060	.7890
		.083	1.034
		.090	1.172
		.120	1.448
		.060	.9580
1-1/2"	X	.083	1.256
		.090	1.426
		.120	1.769
		.188	2.634
		.060	.9580

PATTON'S TYPICALLY STOCKS 20' & 24' LENGTHS OF TUBE, WHICH ARE INDUSTRY STANDARD LENGTHS

PLEASE LET US KNOW IF YOU NEED A SIZE OTHER THAN LISTED ABOVE

**PRODUCTS ARE SUBJECT TO AVAILABILITY OR SPECIAL ORDERING**



# ROUND TUBING



## ASTM A-500 • A36 ROUND TUBE

DIMENSIONS		WALL THICKNESS	LBS/FOOT
1-5/8"	X	.090	1.552
1-3/4"	X	.060	1.050
	X	.090	1.600
	X	.120	2.089
2"	X	.035	0.734
	X	.049	1.021
	X	.060	1.343
	X	.090	1.933
	X	.120	2.409
2-1/8"	X	.049	1.086
2-1/4"	X	.120	2.730
2-1/2"	X	.060	1.690
	X	.120	3.050
3"	X	.060	1.975
	X	.090	2.947
	X	.120	3.691
4"	X	.120	4.973
5"	X	.120	6.254
	X	.188	9.662
6"	X	.120	7.536
	X	.188	11.67

PATTON'S TYPICALLY STOCKS 20' & 24' LENGTHS OF TUBE, WHICH ARE INDUSTRY STANDARD LENGTHS

PLEASE LET US KNOW IF YOU NEED A SIZE OTHER THAN LISTED ABOVE

**PRODUCTS ARE SUBJECT TO AVAILABILITY OR SPECIAL ORDERING**



# WELDED PIPE



## PATTON'S TYPICALLY STOCK 21' & 24' LENGTHS OF PIPE, WHICH ARE INDUSTRY STANDARD LENGTHS

INNER DIAM.	OUTER DIAM.	SCH. 10 WALL	SCH. 40 WALL	SCH. 80 WALL	LBS/FOOT (SCH. 40)
1/8"	.405	.049	.068	.095	.2477
1/4"	.540	.065	.088	.119	.4248
3/8"	.675	.065	.091	.126	.565
1/2"	.840	.083	.109	.147	.851
3/4"	1.050	.083	.113	.154	1.130
1"	1.315	.109	.133	.179	1.680
1-1/4"	1.660	.109	.140	.191	2.273
1-1/2"	1.900	.109	.147	.200	2.718
2"	2.375	.109	.154	.218	3.653
2-1/2"	2.875	.120	.203	.276	5.793
3"	3.500	.120	.216	.300	7.576
3-1/2"	4.000	.120	.226	.318	9.109
4"	4.500	.120	.237	.337	10.79
5"	5.563	.134	.258	.375	14.62
6"	6.625	.134	.280	.432	18.97
8"	8.625	.148	.322	.500	28.55
10"	10.75	.165	.365	.594	40.48
12"	12.75	.180	.406	.688	53.52

**WE ALSO CARRY UNCOATED PIPE, GRADE B PIPE, & GALVANIZED PIPE. WE CAN SPECIAL ORDER VARYING LENGTH OF PIPE LISTED ABOVE AS WELL**

PLEASE LET US KNOW IF YOU NEED A SIZE OTHER THAN LISTED ABOVE

**PRODUCTS ARE SUBJECT TO AVAILABILITY OR SPECIAL ORDERING**





# HOT ROLL ANGLE

## EQUAL LEGS ANGLE

DIMENSIONS					THICKNESS	LBS PER FOOT	LBS PER LENGTH (20')
1/2	X	1/2	X	1/8		.380	7.60
3/4	X	3/4	X	1/8		.590	11.80
1	X	1	X	1/8	.800	16.00	
				3/16	1.16	23.20	
				1/4	1.49	29.80	
1-1/4	X	1-1/4	X	1/8	1.01	20.20	
				3/16	1.48	29.60	
				1/4	1.92	38.40	
1-1/2	X	1-1/2	X	1/8	1.23	24.60	
				3/16	1.80	36.00	
				1/4	2.34	46.80	
				3/8	3.35	67.00	
1-3/4	X	1-3/4	X	1/8	1.44	28.80	
				3/16	2.12	42.40	
				1/4	2.77	55.40	
2	X	2	X	1/8	1.65	33.00	
				3/16	2.44	48.80	
				1/4	3.19	63.80	
				3/8	4.70	94.00	
2-1/2	X	2-1/2	X	3/16	3.07	61.40	
				1/4	4.10	82.00	
				3/8	5.90	118.0	
				1/2	7.70	154.0	
3	X	3	X	3/16	3.71	74.20	
				1/4	4.90	98.00	
				5/16	6.10	122.0	
				3/8	7.20	144.0	
				1/2	9.40	188.0	

PLEASE LET US KNOW IF YOU NEED A SIZE OTHER THAN LISTED ABOVE

PRODUCTS ARE SUBJECT TO AVAILABILITY OR SPECIAL ORDERING



# HOT ROLL ANGLE

## EQUAL LEGS ANGLE

DIMENSIONS					THICKNESS	LBS PER FOOT	LBS PER LENGTH (20')
3-1/2	X	3-1/2	X	1/4	5.80	116.0	
				3/8	8.50	170.0	
				1/2	11.1	222.0	
4	X	4	X	1/4	6.60	132.0	
				5/16	8.20	164.0	
				3/8	9.80	196.0	
				1/2	12.8	256.0	
				5/8	15.7	314.0	
5	X	5	X	3/4	18.5	370.0	
				5/16	10.3	206.0	
				3/8	12.3	246.0	
6	X	6	X	1/2	16.2	324.0	
				5/8	20.0	400.0	
				3/4	23.6	472.0	
				5/16	12.4	248.0	
				3/8	14.9	298.0	
8	X	8	X	1/2	19.6	392.0	
				5/8	24.2	484.0	
				3/4	28.7	574.0	
				1	37.4	748.0	
				1/2	26.4	528.0	
8	X	8	X	5/8	32.7	654.0	
				3/4	38.9	778.0	
				1	51.0	1020.0	

PLEASE LET US KNOW IF YOU NEED A SIZE OTHER THAN LISTED ABOVE

PRODUCTS ARE SUBJECT TO AVAILABILITY OR SPECIAL ORDERING



# HOT ROLL ANGLE

## UNEQUAL LEGS ANGLE

DIMENSIONS				THICKNESS	LBS PER FOOT	LBS PER LENGTH (20')
2	x	1-1/2	x	1/8	1.44	28.80
2	x	1-1/2	x	3/16	2.12	42.40
2	x	1-1/2	x	1/4	2.77	55.40
2-1/2	x	1-1/2	x	3/16	2.44	48.80
2-1/2	x	1-1/2	x	1/4	3.19	63.80
2-1/2	x	2	x	3/16	2.75	55.00
2-1/2	x	2	x	1/4	3.62	72.40
2-1/2	x	2	x	3/8	5.30	106.00
3	x	2	x	3/16	3.07	61.40
3	x	2	x	1/4	4.10	82.00
3	x	2	x	3/8	5.90	118.00
3	x	2	x	1/2	7.70	154.00
3	x	2-1/2	x	3/16	3.39	67.80
3	x	2-1/2	x	1/4	4.50	90.00
3	x	2-1/2	x	3/8	6.60	132.00
3	x	2-1/2	x	1/2	8.50	170.00
3-1/2	x	2-1/2	x	1/4	4.90	98.00
3-1/2	x	2-1/2	x	3/8	7.20	144.00
3-1/2	x	2-1/2	x	1/2	9.40	188.00
3-1/2	x	3	x	1/4	5.40	108.00
3-1/2	x	3	x	3/8	7.90	158.00
3-1/2	x	3	x	1/2	10.20	204.00
4	x	3	x	1/4	5.80	116.00
4	x	3	x	3/8	8.50	170.00
4	x	3	x	1/2	11.10	222.00
4	x	3-1/2	x	1/4	6.20	124.00
4	x	3-1/2	x	1/2	11.90	238.00

PLEASE LET US KNOW IF YOU NEED A SIZE OTHER THAN LISTED ABOVE

PRODUCTS ARE SUBJECT TO AVAILABILITY OR SPECIAL ORDERING



# HOT ROLL ANGLE

## UNEQUAL LEGS ANGLE

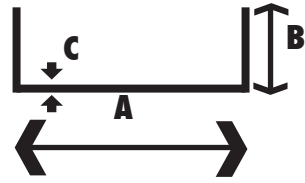
DIMENSIONS				THICKNESS	LBS PER FOOT	LBS PER LENGTH (20')
5	X	3	X	1/4	6.60	132.00
5	X	3	X	3/8	9.80	196.00
5	X	3	X	1/2	12.80	256.00
5	X	3-1/2	X	1/4	7.00	140.00
5	X	3-1/2	X	3/8	10.40	208.00
5	X	3-1/2	X	1/2	13.60	272.00
6	X	3-1/2	X	1/4	7.90	158.00
6	X	3-1/2	X	5/16	9.80	196.00
6	X	3-1/2	X	3/8	11.70	234.00
6	X	3-1/2	X	1/2	15.30	306.00
6	X	4	X	5/16	10.30	206.00
6	X	4	X	3/8	12.30	246.00
6	X	4	X	1/2	16.20	324.00
6	X	4	X	5/8	20.00	400.00
6	X	4	X	3/4	23.60	472.00
6	X	4	X	1	30.60	612.00
7	X	4	X	3/8	13.60	272.00
7	X	4	X	1/2	17.90	358.00
7	X	4	X	5/8	22.10	442.00
7	X	4	X	3/4	26.20	524.00
8	X	4	X	1/2	19.60	392.00
8	X	4	X	5/8	24.20	484.00
8	X	4	X	3/4	28.70	574.00
8	X	4	X	1	37.40	748.00
8	X	6	X	1/2	23.00	460.00
8	X	6	X	5/8	28.50	570.00
8	X	6	X	3/4	33.80	676.00
8	X	6	X	7/8	39.10	782.00
8	X	6	X	1	44.20	884.00
9	X	4	X	1/2	21.30	426.00
9	X	4	X	5/8	26.30	526.00

PLEASE LET US KNOW IF YOU NEED A SIZE OTHER THAN LISTED ABOVE

PRODUCTS ARE SUBJECT TO AVAILABILITY OR SPECIAL ORDERING



# CHANNEL



## BAR CHANNEL

1 X 1/2 X 1/8	0.84 LB/FOOT	2 X 9/16 X 3/16	1.86 LB/FOOT
1-1/2 X 1/2 X 1/8	1.12 LB/FOOT	2 X 1 X 1/8	1.78 LB/FOOT
1-1/2 X 3/4 X 1/8	1.17 LB/FOOT	2 X 1 X 3/16	2.57 LB/FOOT

## STRUCTURAL CHANNEL

SIZE IN INCHES	LBS PER FOOT	A DEPTH IN INCHES	B FLANGE WIDTH	C WEB THICKNESS
3 X	4.1	3	1.410	0.170
X	5.0	3	1.498	0.258
X	6.0	3	1.596	0.356
4 X	5.4	4	1.584	0.184
X	6.25	4	1.647	0.247
X	7.25	4	1.721	0.321
5 X	6.7	5	1.750	0.190
X	9.0	5	1.885	0.325
6 X	8.2	6	1.920	0.200
X	10.5	6	2.034	0.314
X	13	6	2.157	0.437
7 X	9.8	7	2.090	0.210
8 X	11.5	8	2.260	0.220
X	13.75	8	2.343	0.303
9 X	13.4	9	2.433	0.233
10 X	15.3	10	2.600	0.240
X	20.0	10	2.739	0.379
X	25.0	10	2.886	0.526
12 X	20.7	12	2.942	0.282
X	25.0	12	3.047	0.387

PLEASE LET US KNOW IF YOU NEED A SIZE OTHER THAN LISTED ABOVE

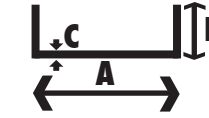
PRODUCTS ARE SUBJECT TO AVAILABILITY OR SPECIAL ORDERING



# MISCELLANEOUS CHANNEL



## MISCELLANEOUS CHANNEL



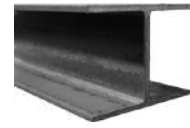
SIZE IN INCHES	LBS PER FOOT	A DEPTH IN INCHES	B FLANGE WIDTH	C WEB THICKNESS
<b>JUNIOR CHANNEL</b>				
MC 3 X	7.1	3	1.938	0.312
MC 4 X	13.8	4	2.500	0.500
MC 6 X	12	6	2.497	0.310
X	15.3	6	3.500	0.340
MC 8 X	8.5	8	1.875	0.188
X	18.7	8	2.978	0.353
X	20	8	3.025	0.400
MC 10 X	6.5	10	1.125	0.150
X	8.4	10	1.500	0.170
MC 12 X	10.6	12	1.500	0.190
<b>MISCELLANEOUS CHANNEL</b>				
MC 6 X	15.3	6	3.500	0.340
X	16.3	6	3.000	0.375
MC 8 X	20.0	8	3.025	0.400
X	21.4	8	3.450	0.375
X	22.8	8	3.502	0.427
MC 10 X	22.0	10	3.376	0.312
X	28.5	10	3.950	0.425
MC 12 X	35.0	12	3.767	0.467
MC 13 X	31.8	13	4.000	0.375
MC 18 X	42.7	18	3.950	0.450
X	58.0	18	4.200	0.700

PLEASE LET US KNOW IF YOU NEED A SIZE OTHER THAN LISTED ABOVE

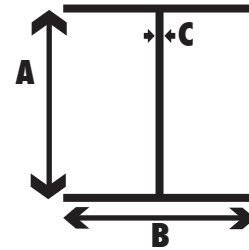
PRODUCTS ARE SUBJECT TO AVAILABILITY OR SPECIAL ORDERING



# WIDE FLANGE BEAM



SIZE IN INCHES	LBS PER FOOT	A DEPTH IN INCHES	B FLANGE WIDTH	C WEB THICKNESS
W4 X	13	4.16	4.060	.280
W5 X	16	5.01	5.000	.240
W5 X	19	5.15	5.030	.270
W6 X	9	5.90	3.940	.170
W6 X	12	6.03	4.000	.230
W6 X	15	5.99	5.990	.230
W6 X	16	6.28	4.030	.260
W6 X	20	6.20	6.020	.260
W6 X	25	6.38	6.080	.320
W8 X	10	7.89	3.940	.170
W8 X	13	7.99	4.000	.230
W8 X	15	8.11	4.015	.245
W8 X	18	8.14	5.250	.230
W8 X	21	8.28	5.270	.250
W8 X	24	7.93	6.495	.245
W8 X	28	8.06	6.535	.285
W8 X	31	8.00	7.995	.285
W8 X	35	8.12	8.020	.310
W8 X	40	8.25	8.070	.360
W8 X	48	8.50	8.110	.400
W10 X	12	9.87	3.960	.190
W10 X	15	9.99	4.000	.230
W10 X	17	10.11	4.010	.240
W10 X	19	10.24	4.020	.250
W10 X	22	10.17	5.750	.240
W10 X	26	10.33	5.770	.260
W10 X	30	10.47	5.810	.300
W10 X	33	9.73	7.960	.290
W10 X	39	9.92	7.985	.315
W10 X	45	10.10	8.020	.350
W10 X	49	9.98	10.00	.340
W10 X	54	10.09	10.03	.370
W10 X	60	10.22	10.08	.420
W10 X	68	10.40	10.13	.470

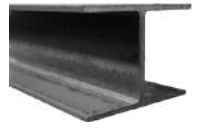


PLEASE LET US KNOW IF YOU NEED A SIZE OTHER THAN LISTED ABOVE

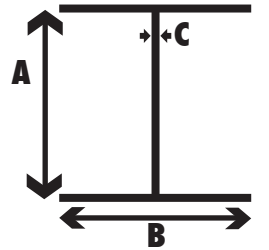
PRODUCTS ARE SUBJECT TO AVAILABILITY OR SPECIAL ORDERING



# WIDE FLANGE BEAM



SIZE IN INCHES	LBS PER FOOT	A DEPTH IN INCHES	B FLANGE WIDTH	C WEB THICKNESS
W12 X	14	11.91	3.970	.200
W12 X	16	11.99	3.990	.220
W12 X	19	12.16	4.005	.235
W12 X	22	12.31	4.030	.260
W12 X	26	12.22	6.490	.230
W12 X	30	12.34	6.520	.260
W12 X	35	12.50	6.560	.300
W12 X	40	11.94	8.005	.295
W12 X	45	12.06	8.045	.335
W12 X	50	12.19	8.080	.370
W12 X	53	12.06	9.995	.345
W12 X	58	12.19	10.010	.360
W12 X	65	12.12	12.000	.390
W12 X	72	12.25	12.040	.430
W12 X	79	12.38	12.080	.470
W12 X	87	12.53	12.125	.515
W12 X	96	12.71	12.160	.550
W14 X	22	13.72	5.000	.230
W14 X	26	13.91	5.025	.255
W14 X	30	13.84	6.730	.270
W14 X	34	13.98	6.745	.285
W14 X	38	14.10	6.770	.310
W14 X	43	13.66	7.995	.305
W14 X	48	13.79	8.030	.340
W14 X	53	13.92	8.060	.370
W14 X	61	13.89	9.995	.375
W14 X	68	14.04	10.035	.415
W14 X	74	14.17	10.070	.450
W16 X	26	15.69	5.500	.250
W16 X	31	15.88	5.525	.275
W16 X	36	15.86	6.985	.295
W16 X	40	16.01	6.995	.305
W16 X	45	16.13	7.035	.345
W16 X	50	16.26	7.070	.380
W16 X	57	16.43	7.120	.430
W16 X	67	16.33	10.235	.395
W16 X	77	16.52	10.295	.455



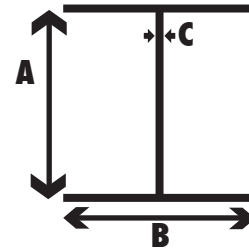
PLEASE LET US KNOW IF YOU NEED A SIZE OTHER THAN LISTED ABOVE

PRODUCTS ARE SUBJECT TO AVAILABILITY OR SPECIAL ORDERING



# WIDE FLANGE BEAM

SIZE IN INCHES	LBS PER FOOT	A DEPTH IN INCHES	B FLANGE WIDTH	C WEB THICKNESS
W18 X 18	18	17.70	6.000	.300
W18 X 40	40	17.90	6.015	.315
W18 X 46	46	18.06	6.060	.360
W18 X 50	50	17.99	7.495	.355
W18 X 55	55	18.11	7.530	.390
W18 X 60	60	18.24	7.555	.415
W18 X 65	65	18.35	7.590	.450
W18 X 71	71	18.47	7.635	.495
W18 X 76	76	18.21	11.035	.425
W18 X 86	86	18.39	11.090	.480
W18 X 97	97	18.59	11.145	.535
W18 X 106	106	18.73	11.200	.590
W18 X 119	119	18.97	11.265	.655
W21 X 44	44	20.66	6.500	.350
W21 X 50	50	20.83	6.530	.380
W21 X 57	57	21.06	6.555	.405
W21 X 62	62	20.99	8.240	.400
W21 X 68	68	21.13	8.270	.430
W21 X 73	73	21.24	8.295	.455
W21 X 83	83	21.43	8.355	.515
W21 X 93	93	21.62	8.420	.580
W21 X 101	101	21.36	12.290	.500
W21 X 111	111	21.51	12.340	.550
W21 X 122	122	21.68	12.390	.600
W24 X 55	55	23.57	7.005	.395
W24 X 62	62	23.74	7.040	.430
W24 X 68	68	23.73	8.965	.415
W24 X 76	76	23.92	8.990	.440
W24 X 84	84	24.10	9.020	.470
W24 X 94	94	24.31	9.065	.515
W24 X 104	104	24.06	12.750	.500
W27 X 84	84	26.71	9.960	.460
W27 X 94	94	26.92	9.990	.490
W27 X 102	102	27.09	10.015	.515
W27 X 114	114	27.29	10.070	.570
W27 X 146	146	27.38	13.965	.605



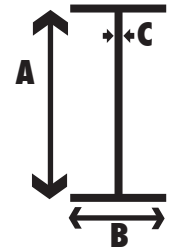
PLEASE LET US KNOW IF YOU NEED A SIZE OTHER THAN LISTED ABOVE

PRODUCTS ARE SUBJECT TO AVAILABILITY OR SPECIAL ORDERING



# STANDARD I-BEAM

SIZE IN INCHES	LBS PER FOOT	A DEPTH IN INCHES	B FLANGE WIDTH	C WEB THICKNESS
S3 X 5.7	5.7	3	2.330	.170
S3 X 7.5	7.5	3	2.509	.349
S4 X 7.7	7.7	4	2.663	.193
S4 X 9.5	9.5	4	2.796	.326
S5 X 10.0	10.0	5	3.004	.214
S5 X 14.75	14.75	5	3.284	.494
S6 X 12.5	12.5	6	3.332	.232
S6 X 17.25	17.25	6	3.565	.465
S7 X 15.3	15.3	7	3.662	.252
S7 X 20.0	20.0	7	3.860	.450
S8 X 18.4	18.4	8	4.001	.271
S8 X 23.0	23.0	8	4.171	.441
S10 X 25.4	25.4	10	4.661	.311
S10 X 35.0	35.0	10	4.944	.594
S12 X 31.8	31.8	12	5.000	.350
S12 X 35.0	35.0	12	5.078	.428
S12 X 40.8	40.8	12	5.252	.462
S12 X 50.0	50.0	12	5.477	.687
S15 X 42.9	42.9	15	5.501	.411
S15 X 50.0	50.0	15	5.640	.550
S18 X 54.7	54.7	18	6.001	.461
S18 X 70	70	18	6.251	.711
S20 X 66	66	20	6.255	.505
S24 X 80	80	24	7.000	.500
S24 X 100	100	24	7.245	.745
S24 X 106	106	24	7.870	.620



PLEASE LET US KNOW IF YOU NEED A SIZE OTHER THAN LISTED ABOVE

PRODUCTS ARE SUBJECT TO AVAILABILITY OR SPECIAL ORDERING



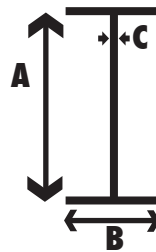


# MISCELLANEOUS BEAM



## MISCELLANEOUS BEAM

SIZE IN INCHES	LBS PER FOOT	A FLANGE DEPTH	B FLANGE WIDTH	B WEB THICKNESS
M4 X	13.0	4	3.940	.254
M5 X	18.9	5	5.003	.316
M6 X	4.4	6	1.844	.114
X	20.0	6.20	6.020	.260
M7 X	5.5	7	2.125	.125
M8 X	6.5	8	2.281	.135
M10 X	9.0	10	2.690	.157
M12 X	11.8	12	3.065	.177
M14 X	17.2	14	4	.188



### DID YOU KNOW...

PATTON'S IS HERE FOR ALL OF YOUR METAL NEEDS!  
WE STOCK THOUSANDS OF SIZES OF STEEL,  
ALUMINUM, STAINLESS, & GALVANIZED PRODUCTS

#### PATTON'S PROCESSING INCLUDES:

PLASMA CUTTING • PLATE BURNING • BENDING • BREAKING  
CUTTING TO LENGTH • PUNCHING • SHEARING

**QUOTE REQUESTS ONLINE OR OVER THE PHONE!**

CALL 800.792.9762 OR VISIT PATTONSCORP.COM

PLEASE LET US KNOW IF YOU NEED A SIZE OTHER THAN LISTED ABOVE

PRODUCTS ARE SUBJECT TO AVAILABILITY OR SPECIAL ORDERING



# HOT ROLL FLAT BAR



## 1/8" FLAT BAR

DIMENSIONS			LBS/FOOT	LBS/LENGTH (20')
1/8	X	1/2	.213	4.26
1/8	X	5/8	.266	5.32
1/8	X	3/4	.319	6.38
1/8	X	1	.425	8.50
1/8	X	1-1/4	.531	10.62
1/8	X	1-1/2	.638	12.76
1/8	X	1-3/4	.744	14.88
1/8	X	2	.850	17.00
1/8	X	2-1/2	1.063	21.26
1/8	X	3	1.275	25.50
1/8	X	3-1/2	1.488	29.76
1/8	X	4	1.700	34.00
1/8	X	5	2.125	42.50
1/8	X	6	2.550	51.00
1/8	X	8	3.400	68.00
1/8	X	10	4.250	85.00
1/8	X	12	5.100	102.00

## 3/16" FLAT BAR

DIMENSIONS			LBS/FOOT	LBS/LENGTH (20')
3/16	X	1/2	.319	6.38
3/16	X	5/8	.398	7.96
3/16	X	3/4	.478	9.56
3/16	X	1	.638	12.76
3/16	X	1-1/4	.797	15.94
3/16	X	1-1/2	.956	19.12
3/16	X	1-3/4	1.116	22.32
3/16	X	2	1.275	25.50
3/16	X	2-1/2	1.594	31.88
3/16	X	3	1.913	38.26
3/16	X	3-1/2	2.231	44.62
3/16	X	4	2.550	51.00
3/16	X	5	3.188	63.76
3/16	X	6	3.825	76.56
3/16	X	8	5.105	102.10
3/16	X	10	6.375	127.50
3/16	X	12	7.650	153.00

PLEASE LET US KNOW IF YOU NEED A SIZE OTHER THAN LISTED ABOVE

PRODUCTS ARE SUBJECT TO AVAILABILITY OR SPECIAL ORDERING



# HOT ROLL FLAT BAR



## 1/4" FLAT BAR

DIMENSIONS			LBS/FOOT	LBS/LENGTH (20')
1/4	X	1/2	.425	8.50
1/4	X	5/8	.531	10.62
1/4	X	3/4	.638	12.76
1/4	X	1	.850	17.00
1/4	X	1-1/4	1.063	21.26
1/4	X	1-1/2	1.275	25.50
1/4	X	1-3/4	1.488	29.76
1/4	X	2	1.700	34.00
1/4	X	2-1/2	2.125	42.50
1/4	X	3	2.550	51.00
1/4	X	3-1/2	2.975	59.50
1/4	X	4	3.400	68.00
1/4	X	5	4.250	85.00
1/4	X	6	5.100	102.00
1/4	X	7	5.956	119.12
1/4	X	8	6.800	136.00
1/4	X	10	8.500	170.00
1/4	X	12	10.200	204.00

## 5/16" FLAT BAR

DIMENSIONS			LBS/FOOT	LBS/LENGTH (20')
5/16	X	1	1.063	21.26
5/16	X	1-1/4	1.328	26.56
5/16	X	1-1/2	1.594	31.88
5/16	X	1-3/4	1.859	37.18
5/16	X	2	2.125	42.50
5/16	X	2-1/2	2.656	53.12
5/16	X	3	3.188	63.76
5/16	X	3-1/2	3.719	74.38
5/16	X	4	4.250	85.00
5/16	X	5	5.318	106.36
5/16	X	6	6.375	127.50

## 3/8" FLAT BAR

DIMENSIONS			LBS/FOOT	LBS/LENGTH (20')
3/8	X	1/2	.638	12.76
3/8	X	3/4	.956	19.12
3/8	X	1	1.275	25.50
3/8	X	1-1/4	1.594	31.88
3/8	X	1-1/2	1.913	38.26
3/8	X	1-3/4	2.231	44.62
3/8	X	2	2.550	51.00
3/8	X	2-1/2	3.188	63.76
3/8	X	3	3.825	76.50
3/8	X	3-1/2	4.463	89.76
3/8	X	4	5.100	102.00
3/8	X	5	6.375	127.50
3/8	X	6	7.650	153.00
3/8	X	7	8.930	178.60
3/8	X	8	10.200	204.00
3/8	X	10	12.760	255.20
3/8	X	12	15.300	306.00

PLEASE LET US KNOW IF YOU NEED A SIZE OTHER THAN LISTED ABOVE

**PRODUCTS ARE SUBJECT TO AVAILABILITY OR SPECIAL ORDERING**



# HOT ROLL FLAT BAR



## 1/2" FLAT BAR

DIMENSIONS			LBS/FOOT	LBS/LENGTH (20')
1/2	X	3/4	1.275	25.50
1/2	X	1	1.700	34.00
1/2	X	1-1/4	2.125	42.50
1/2	X	1-1/2	2.550	51.00
1/2	X	1-3/4	2.975	59.50
1/2	X	2	3.400	68.00
1/2	X	2-1/2	4.250	85.00
1/2	X	3	5.100	102.00
1/2	X	3-1/2	5.950	119.00
1/2	X	4	6.800	136.00
1/2	X	5	8.500	170.00
1/2	X	6	10.200	204.00
1/2	X	7	11.910	238.20
1/2	X	8	13.600	272.00
1/2	X	9	15.310	306.30
1/2	X	10	17.000	340.00
1/2	X	12	20.400	408.00

## 5/8" FLAT BAR

DIMENSIONS			LBS/FOOT	LBS/LENGTH (20')
5/8	X	1	2.130	42.60
5/8	X	1-1/2	3.188	63.76
5/8	X	2	4.250	85.00
5/8	X	2-1/2	5.313	106.26
5/8	X	3	6.375	127.50
5/8	X	3-1/2	7.438	148.76
5/8	X	4	8.500	170.00
5/8	X	5	10.625	212.50
5/8	X	6	12.750	255.00
5/8	X	8	17.000	340.00
5/8	X	10	21.250	425.00
5/8	X	12	25.500	510.00

## 3/4" FLAT BAR

DIMENSIONS			LBS/FOOT	LBS/LENGTH (20')
3/4	X	1	2.550	51.00
3/4	X	1-1/4	3.188	63.76
3/4	X	1-1/2	3.825	76.50
3/4	X	1-3/4	4.463	89.26
3/4	X	2	5.100	102.00
3/4	X	2-1/2	6.375	127.50
3/4	X	3	7.650	153.00
3/4	X	3-1/2	8.925	178.50
3/4	X	4	10.200	204.00
3/4	X	5	12.750	255.00
3/4	X	6	15.300	306.00
3/4	X	8	20.400	408.00
3/4	X	10	25.500	510.00
3/4	X	12	30.600	612.00

PLEASE LET US KNOW IF YOU NEED A SIZE OTHER THAN LISTED ABOVE

**PRODUCTS ARE SUBJECT TO AVAILABILITY OR SPECIAL ORDERING**



# HOT ROLL FLAT BAR



## 1" FLAT BAR

DIMENSIONS			LBS/FOOT	LBS/LENGTH (20')
1	X	1-1/2	5.100	102.00
1	X	2	6.800	136.00
1	X	2-1/2	8.500	170.00
1	X	3	10.200	204.00
1	X	4	13.610	272.30
1	X	5	17.000	340.00
1	X	6	20.400	408.00
1	X	7	23.800	476.00
1	X	8	27.200	544.00
1	X	10	34.030	680.60
1	X	12	40.840	816.80

## 1-1/4" FLAT BAR

DIMENSIONS			LBS/FOOT	LBS/LENGTH (20')
1-1/4	X	2	8.500	170.00
1-1/4	X	2-1/2	10.625	212.50
1-1/4	X	3	12.750	255.00
1-1/4	X	3-1/2	14.875	297.50
1-1/4	X	4	17.000	340.00

## 1-1/2" FLAT BAR

DIMENSIONS			LBS/FOOT	LBS/LENGTH (20')
1-1/2	X	2	10.200	204.00
1-1/2	X	2-1/2	12.750	255.00
1-1/2	X	3	15.300	306.00
1-1/2	X	4	20.400	408.00
1-1/2	X	6	30.630	612.60

## 2" FLAT BAR

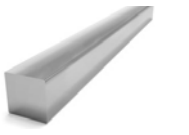
DIMENSIONS			LBS/FOOT	LBS/LENGTH (20')
2	X	3	20.400	408.00
2	X	4	27.200	544.00
2	X	5	34.000	680.00
2	X	6	40.800	816.00
2	X	7	47.600	952.00
2	X	8	54.400	1088.00

PLEASE LET US KNOW IF YOU NEED A SIZE OTHER THAN LISTED ABOVE

PRODUCTS ARE SUBJECT TO AVAILABILITY OR SPECIAL ORDERING



# HOT ROLL SQUARE BAR



## ASTM A36 SQUARE BAR

DIMENSIONS	LBS/FT	LBS/LENGTH
1/4" SQUARE	.213	4.26
5/16" SQUARE	.332	6.64
3/8" SQUARE	.478	9.56
7/16" SQUARE	.651	13.02
1/2" SQUARE	.850	17.00
5/8" SQUARE	1.328	26.56
3/4" SQUARE	1.913	38.26
7/8" SQUARE	2.603	52.06
1" SQUARE	3.400	68.00
1-1/4" SQUARE	5.313	106.26
1-1/2" SQUARE	7.650	153.00
1-3/4" SQUARE	10.42	208.40
2" SQUARE	13.60	272.30

# HOT ROLL ROUND BAR



## ASTM A36 ROUND BAR

DIMENSIONS	LBS/FT	LBS/LENGTH
1/4" ROUND	.167	3.34
5/16" ROUND	.261	5.22
3/8" ROUND	.376	7.52
7/16" ROUND	.511	10.22
1/2" ROUND	.668	13.36
9/16" ROUND	.845	16.90
5/8" ROUND	1.043	20.86
3/4" ROUND	1.502	30.04
7/8" ROUND	2.040	40.80
1" ROUND	2.670	53.40
1-1/8" ROUND	3.380	67.60
1-1/4" ROUND	4.170	83.40
1-3/8" ROUND	5.050	101.00
1-1/2" ROUND	6.010	120.20
1-3/4" ROUND	8.180	163.60
2" ROUND	10.680	213.60

PLEASE LET US KNOW IF YOU NEED A SIZE OTHER THAN LISTED ABOVE

PRODUCTS ARE SUBJECT TO AVAILABILITY OR SPECIAL ORDERING



# HOT ROLL SHEET



## 10 GAUGE SHEET

LENGTH	WIDTH	LBS/SQ. FOOT	TOTAL WEIGHT
48" X	96"	5.625	180.00
X	120"	5.625	225.00
X	144"	5.625	270.00
60" X	120"	5.625	281.25

## 11 GAUGE SHEET

LENGTH	WIDTH	LBS/SQ. FOOT	TOTAL WEIGHT
48" X	96"	5.00	160.00
X	120"	5.00	200.00
X	144"	5.00	240.00
60" X	120"	5.00	250.00

## 12 GAUGE SHEET

LENGTH	WIDTH	LBS/SQ. FOOT	TOTAL WEIGHT
48" X	96"	4.375	140.00
X	120"	4.375	175.00
X	144"	4.375	210.00
60" X	120"	4.375	218.75

## 14 GAUGE SHEET

LENGTH	WIDTH	LBS/SQ. FOOT	TOTAL WEIGHT
48" X	96"	3.125	100.00
X	120"	3.125	125.00
X	144"	3.125	150.00
60" X	120"	3.125	156.25

## 16 GAUGE SHEET

LENGTH	WIDTH	LBS/SQ. FOOT	TOTAL WEIGHT
48" X	96"	2.500	80.00
X	120"	2.500	100.00
X	144"	2.500	120.00
60" X	120"	2.500	125.00

**WE ALSO CARRY PRE-CUTS... CHECK PAGE 40 FOR OUR SELECTION**

PRODUCTS ARE SUBJECT TO AVAILABILITY OR SPECIAL ORDERING



# GALVANIZED SHEET



## 10 GAUGE SHEET

LENGTH	WIDTH	LBS/SQ. FOOT	TOTAL WEIGHT
48" X	120"	5.78125	231.25

## 11 GAUGE SHEET

LENGTH	WIDTH	LBS/SQ. FOOT	TOTAL WEIGHT
48" X	120"	5.15625	206.25

## 12 GAUGE SHEET

LENGTH	WIDTH	LBS/SQ. FOOT	TOTAL WEIGHT
48" X	120"	4.53125	181.25

## 14 GAUGE SHEET

LENGTH	WIDTH	LBS/SQ. FOOT	TOTAL WEIGHT
48" X	120"	3.28125	131.25

## 16 GAUGE SHEET

LENGTH	WIDTH	LBS/SQ. FOOT	TOTAL WEIGHT
48" X	120"	2.65625	106.25

## 18 GAUGE SHEET

LENGTH	WIDTH	LBS/SQ. FOOT	TOTAL WEIGHT
48" X	120"	2.15625	86.25

## 20 GAUGE SHEET

LENGTH	WIDTH	LBS/SQ. FOOT	TOTAL WEIGHT
48" X	120"	1.65625	66.25

## 22 GAUGE SHEET

LENGTH	WIDTH	LBS/SQ. FOOT	TOTAL WEIGHT
48" X	120"	1.40625	56.25

## 24 GAUGE SHEET

LENGTH	WIDTH	LBS/SQ. FOOT	TOTAL WEIGHT
48" X	120"	1.15625	46.25

## 26 GAUGE SHEET

LENGTH	WIDTH	LBS/SQ. FOOT	TOTAL WEIGHT
48" X	120"	.90625	36.25

**WE ALSO CARRY PRE-CUTS... CHECK PAGE 40 FOR OUR SELECTION**

PRODUCTS ARE SUBJECT TO AVAILABILITY OR SPECIAL ORDERING



# COLD ROLL SHEET



## 11 GAUGE SHEET

LENGTH	WIDTH	LBS/SQ. FOOT	TOTAL WEIGHT
48" X	120"	5.00	200.00

## 12 GAUGE SHEET

LENGTH	WIDTH	LBS/SQ. FOOT	TOTAL WEIGHT
48" X	120"	4.375	175.00

## 14 GAUGE SHEET

LENGTH	WIDTH	LBS/SQ. FOOT	TOTAL WEIGHT
48" X	120"	3.125	125.00

## 16 GAUGE SHEET

LENGTH	WIDTH	LBS/SQ. FOOT	TOTAL WEIGHT
48" X	120"	2.500	100.00

## 18 GAUGE SHEET

LENGTH	WIDTH	LBS/SQ. FOOT	TOTAL WEIGHT
48" X	120"	2.000	80.00

## 20 GAUGE SHEET

LENGTH	WIDTH	LBS/SQ. FOOT	TOTAL WEIGHT
48" X	120"	1.500	60.00

## 22 GAUGE SHEET

LENGTH	WIDTH	LBS/SQ. FOOT	TOTAL WEIGHT
48" X	120"	1.250	50.00

## 24 GAUGE SHEET

LENGTH	WIDTH	LBS/SQ. FOOT	TOTAL WEIGHT
48" X	120"	1.000	40.00

**WE ALSO CARRY PRE-CUTS... CHECK PAGE 40 FOR OUR SELECTION**

PRODUCTS ARE SUBJECT TO AVAILABILITY OR SPECIAL ORDERING



# HOT ROLL PLATE



## 3/16" PLATE • A36

LENGTH	WIDTH	LBS/SQ. FOOT	TOTAL WEIGHT
48" X	96"	7.66	245.10
	120"	7.66	306.40
	144"	7.66	367.70
60" X	120"	7.66	383.00

## 1/4" PLATE • A36

LENGTH	WIDTH	LBS/SQ. FOOT	TOTAL WEIGHT
48" X	96"	10.21	326.70
	120"	10.21	408.40
	144"	10.21	490.10
60" X	120"	10.21	510.50

## 5/16" PLATE • A36

LENGTH	WIDTH	LBS/SQ. FOOT	TOTAL WEIGHT
48" X	96"	12.76	408.30
	120"	12.76	510.40

## 3/8" PLATE • A36

LENGTH	WIDTH	LBS/SQ. FOOT	TOTAL WEIGHT
48" X	96"	15.31	489.90
	120"	15.31	612.40
60" X	120"	15.31	765.50

## 7/16" PLATE • A36

LENGTH	WIDTH	LBS/SQ. FOOT	TOTAL WEIGHT
48" X	96"	17.87	571.80

## 1/2" PLATE • A36

LENGTH	WIDTH	LBS/SQ. FOOT	TOTAL WEIGHT
48" X	96"	20.42	653.40
	120"	20.42	816.80
60" X	120"	20.42	1021.00

## 5/8" PLATE • A36

LENGTH	WIDTH	LBS/SQ. FOOT	TOTAL WEIGHT
48" X	96"	25.52	816.60
	120"	25.52	1020.80

PRODUCTS ARE SUBJECT TO AVAILABILITY OR SPECIAL ORDERING





# HOT ROLL PLATE



## 3/4" PLATE

LENGTH	WIDTH	LBS/SQ. FOOT	TOTAL WEIGHT
48" X	96"	30.63	980.20
X	120"	30.63	1225.20

## 1" PLATE

LENGTH	WIDTH	LBS/SQ. FOOT	TOTAL WEIGHT
48" X	96"	40.84	1306.90
X	120"	40.84	1633.60

## 1-1/4" PLATE

LENGTH	WIDTH	LBS/SQ. FOOT	TOTAL WEIGHT
48" X	96"	51.05	1634.00

## 1-1/2" PLATE

LENGTH	WIDTH	LBS/SQ. FOOT	TOTAL WEIGHT
48" X	96"	61.26	1960.00

## 2" PLATE

LENGTH	WIDTH	LBS/SQ. FOOT	TOTAL WEIGHT
48" X	96"	81.68	2614.00

PLEASE LET US KNOW IF YOU NEED A SIZE OTHER THAN LISTED ABOVE

PRODUCTS ARE SUBJECT TO AVAILABILITY OR SPECIAL ORDERING

## PATTON'S PIPE ROLLING

WE ALSO ROLL PLATE &  
PIPE TO CUSTOM SIZES...  
FOR MORE INFORMATION  
VISIT OUR ROLLING DIVISION AT  
[WWW.PATTONSROLLING.COM](http://WWW.PATTONSROLLING.COM)  
OR CALL US AT 800.792.9762

We roll Pipe from an of Outside  
Diameter 28" to 120"  
We Roll Plate From 1/4" to 1-3/8" Thick  
Up To 96" x 480" Sections



# DIAMOND PLATE



## 14 GAUGE

LENGTH	WIDTH	LBS/SQ. FOOT	TOTAL WEIGHT
48" X	96"	3.75	120.00
X	120"	3.75	150.00

## 12 GAUGE

LENGTH	WIDTH	LBS/SQ. FOOT	TOTAL WEIGHT
48" X	96"	5.25	168.00
X	120"	5.25	210.00

## 1/8" THICK

LENGTH	WIDTH	LBS/SQ. FOOT	TOTAL WEIGHT
48" X	96"	6.15	196.80
X	120"	6.15	246.00
60" X	96"	6.15	246.00
X	120"	6.15	307.50

## 3/16" THICK

LENGTH	WIDTH	LBS/SQ. FOOT	TOTAL WEIGHT
48" X	96"	8.71	278.70
X	120"	8.71	348.40
60" X	120"	8.71	435.50
72" X	120"	8.71	522.60

## 1/4" THICK

LENGTH	WIDTH	LBS/SQ. FOOT	TOTAL WEIGHT
48" X	96"	11.26	360.30
X	120"	11.26	450.40
X	144"	11.26	540.48
60" X	120"	11.26	563.00

## 5/16" THICK

LENGTH	WIDTH	LBS/SQ. FOOT	TOTAL WEIGHT
48" X	96"	13.81	441.92
X	120"	13.81	552.40
X	144"	13.81	662.88
60" X	120"	13.81	690.50
X	144"	13.81	828.60

## 3/8" THICK

LENGTH	WIDTH	LBS/SQ. FOOT	TOTAL WEIGHT
48" X	96"	16.37	523.80
X	120"	16.37	654.80
60" X	120"	16.37	818.50

## 1/2" THICK

LENGTH	WIDTH	LBS/SQ. FOOT	TOTAL WEIGHT
48" X	96"	21.47	687.00
60" X	120"	21.47	1288.20

PRODUCTS ARE SUBJECT TO AVAILABILITY OR SPECIAL ORDERING

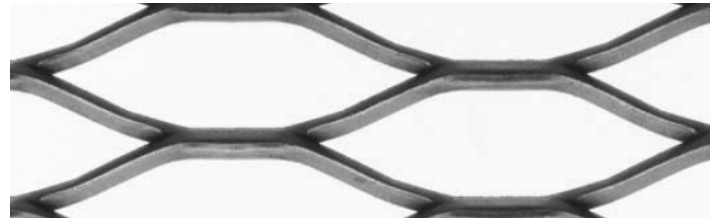


# EXPANDED METAL GRATING

Expanded Metal Grating is a heavy duty expanded metal produced from carbon steel sheet and plate. It contains no joints or welds, as each sheet is a single piece of sturdy steel. Lightweight & economical, grating is the perfect material to use when you need a strong, durable, safe and lightweight. It is the standard product specified by engineers and can be used in a multitude of places including:

Ramps, catwalks, rigs, heavy-duty shelving, stairs, and much more.  
Ask a team member if you have any other questions on this material.

POUNDS PER SQUARE FOOT	STOCK SIZES	DIAMOND SIZE (W X L)
3.0 LBS	48" X 96"	1.33 X 5.33
3.0 LBS	48" X 120"	1.33 X 5.33
4.0 LBS	48" X 96"	1.33 X 5.33
4.0 LBS	48" X 120"	1.33 X 5.33
5.0 LBS	48" X 96"	1.33 X 5.33
5.0 LBS	48" X 120"	1.33 X 5.33

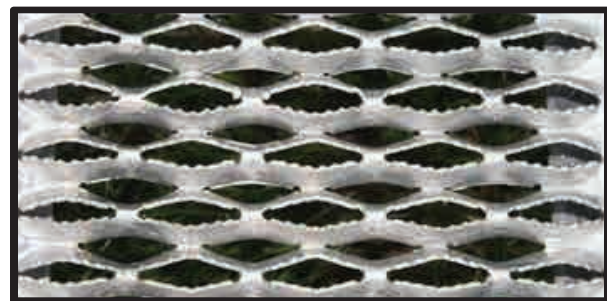


EXAMPLE OF 3.0 LBS EXPANDED METAL GRADING

# GRIP STRUT

GRIP STRUT® Plank Grating offers one of the most slip resistant walking-working surfaces in the industry. The surface of the planks have diamond-shaped openings with serrated edges, making them slip resistant in every direction under practically all conditions. Planks are easy to install and have a high strength-to-weight performance that offers a high load capacity and long life. Grip Strut is commonly used for work platforms, catwalks, transportation servicing areas, vehicle steps, rooftop walkways, and stair treads.

GAUGE	WIDTH	HEIGHT	LENGTH
12	4-3/4"	1-1/2" OR 2"	10' OR 12'
12	7"	1-1/2" OR 2"	10' OR 12'
12	9-1/2"	1-1/2" OR 2"	10' OR 12'
12	11-3/4"	1-1/2" OR 2"	10' OR 12'
12	18-3/4"	1-1/2" OR 2"	10' OR 12'
12	24"	1-1/2" OR 2"	10' OR 12'
14	4-3/4"	1-1/2" OR 2"	10' OR 12'
14	7"	1-1/2" OR 2"	10' OR 12'
14	9-1/2"	1-1/2" OR 2"	10' OR 12'
14	11-3/4"	1-1/2" OR 2"	10' OR 12'
14	18-3/4"	1-1/2" OR 2"	10' OR 12'
14	24"	1-1/2" OR 2"	10' OR 12'



EXAMPLE OF GRIT STRUT

PRODUCTS ARE SUBJECT TO AVAILABILITY OR SPECIAL ORDERING



# EXPANDED & PERFORATED METAL SHEETS

## EXPANDED METAL SHEETS

THICKNESS & OPENING SIZE	SIZE OF SHEET	WEIGHT OF SHEET
1/2" #13	4' X 8'	44.8 LBS
1/2" #13 (PRE-CUT)	4' X 4'	22 LBS
1/2" #16	4' X 8'	26 LBS
1/2" #16 (PRE-CUT)	4' X 4'	13 LBS
3/4" #13	4' X 8'	24 LBS
3/4" #13 (PRE-CUT)	4' X 4'	12 LBS
3/4" #9	4' X 8'	55 LBS
3/4" #9 (PRE-CUT)	4' X 4'	27 LBS
3/4" #9	4' X 10'	72 LBS
3/4" #9	5' X 10'	85 LBS
3/4" #9 RAISED	4' X 8'	55 LBS
1-1/2" #9	4' X 8'	36 LBS

## PERFORATED METAL SHEETS

DIAMETER OF HOLE SIZE	SIZE OF SHEET	WEIGHT OF SHEET
1/16" HOLE	3' X 7'	16 LBS
1/16" HOLE	4' X 7'	22 LBS
1/16" HOLE	4' X 8'	25 LBS
3/32" HOLE	3' X 7'	14 LBS
3/32" HOLE	4' X 7'	18 LBS
3/32" HOLE	4' X 8'	24 LBS

PLEASE LET US KNOW IF YOU NEED A SIZE OTHER THAN LISTED ABOVE

PRODUCTS ARE SUBJECT TO AVAILABILITY OR SPECIAL ORDERING



# PRE-CUT SHEET

COLD ROLLED STEEL	1' X 4'	2' X 4'	4' X 4'
16 GAUGE	10 LBS	20 LBS	40 LBS
18 GAUGE	8 LBS	16 LBS	32 LBS
20 GAUGE	6 LBS	12 LBS	24 LBS
22 GAUGE	5 LBS	10 LBS	20 LBS
24 GAUGE	4 LBS	8 LBS	16 LBS
26 GAUGE	3 LBS	6 LBS	12 LBS
HOT ROLLED STEEL			
11 GAUGE	20 LBS	40 LBS	80 LBS
12 GAUGE	17.50 LBS	35 LBS	70 LBS
14 GAUGE	12.50 LBS	25 LBS	50 LBS
16 GAUGE	10 LBS	20 LBS	40 LBS
GALVANIZED STEEL			
18 GAUGE	8.62 LBS	17.24 LBS	34.48 LBS
20 GAUGE	6.62 LBS	13.24 LBS	26.48 LBS
22 GAUGE	5.62 LBS	11.24 LBS	22.48 LBS
24 GAUGE	4.62 LBS	9.24 LBS	18.48 LBS
TYPE 304 STAINLESS SHEET			
11 GAUGE	21 LBS	42 LBS	84 LBS
16 GAUGE	10.08 LBS	20.16 LBS	40.32 LBS
18 GAUGE	8.06 LBS	16.13 LBS	32.26 LBS
20 GAUGE	6.05 LBS	12.10 LBS	24.20 LBS
22 GAUGE	5.04 LBS	10.08 LBS	20.16 LBS
24 GAUGE	4.03 LBS	8.06 LBS	16.12 LBS
26 GAUGE	3.02 LBS	6.05 LBS	12.10 LBS

	1' X 4'	2' X 4'	4' X 4'
6061 ALUMINUM SHEET			
.063 THICK	3.56 LBS	7.11 LBS	14.22 LBS
.125 THICK	7.06 LBS	14.12 LBS	28.24 LBS
.190 THICK	10.80 LBS	21.60 LBS	43.20 LBS
.250 THICK	14.60 LBS	29.20 LBS	58.40 LBS
5052 ALUMINUM SHEET			
.032 THICK	1.78 LBS	3.56 LBS	7.12 LBS
.040 THICK	2.24 LBS	4.48 LBS	8.96 LBS
.063 THICK	3.52 LBS	7.04 LBS	14.08 LBS
.090 THICK	5.12 LBS	10.24 LBS	20.48 LBS
.125 THICK	6.98 LBS	13.96 LBS	27.92 LBS
.190 THICK	10.63 LBS	21.26 LBS	42.52 LBS
.250 THICK	13.97 LBS	27.94 LBS	55.88 LBS
3003 TREAD-BRITE ALUMINUM			
1/16" THICK	4.04 LBS	8.08 LBS	16.12 LBS
1/8" THICK	7.70 LBS	15.40 LBS	30.80 LBS

### WE ALSO CARRY PRE-CUTS IN:

FLAT BAR  
1/8" THICK BY 1/2" UP TO 2" • IN 2', 4', & 6' LENGTHS

ANGLE  
1/2" X 1/2" X 1/8" (2', 4', & 6') • 3/4" X 3/4" X 1/8" (2', 4', & 6')  
1" X 1" X 1/8" (2', 4', & 6') • 1-1/4" X 1-1/4" X 1/8" (2', 4', & 6')  
1-1/2" X 1-1/2" X 1/8" (2', 4', & 6') • 2" X 2" X 1/8" (2', 4', & 6')

ORNAMENTAL SQUARE TUBE (.060 WALL)  
1/2" (2', 4', & 6') • 3/4" (2', 4', & 6') • 1" (2', 4', & 6')  
1-1/4" (2', 4', & 6') • 1-1/2" (2', 4', & 6')

## PRE - CUT BASE PLATES

1/8" THICK	3/16" THICK	1/4" THICK	3/8" THICK	7/16" THICK	1/2" THICK	5/8" THICK	3/4" THICK	1" THICK
4" X 4"	4" X 4"	4" X 4"	4" X 4"	4" X 4"				
6" X 6"	6" X 6"	6" X 6"	6" X 6"	6" X 6"	6" X 6"			
8" X 8"	8" X 8"	8" X 8"	8" X 8"	8" X 8"	8" X 8"		8" X 8"	
10" X 10"	10" X 10"	10" X 10"	10" X 10"	10" X 10"	10" X 10"	10" X 10"	10" X 10"	
12" X 12"	12" X 12"	12" X 12"	12" X 12"	12" X 12"	12" X 12"	12" X 12"	12" X 12"	12" X 12"
							14" X 14"	14" X 14"
							16" X 16"	16" X 16"
					18" X 18"		18" X 18"	18" X 18"
								24" X 24"



## SECTION II

# ALUMINUM

TREAD BRIGHT • DIAMOND PLATE • SHEET  
PLATE • BAR • SHAPES

# COLD ROLL

BAR • SHEET

# STAINLESS

BAR • SHEET



# 5052 ALUMINUM



## 5052 ALUMINUM SHEET

THICKNESS	SIZE OF PLATE	APPROX. WEIGHT PER SHEET
.032 THICK	48" X 144"	22.60 LBS
	48" X 96"	15.10 LBS
.040 THICK	48" X 144"	28.20 LBS
.050 THICK	48" X 144"	35.00 LBS
.063 THICK	48" X 144"	43.70 LBS
	48" X 120"	36.40 LBS
	48" X 96"	29.20 LBS
.090 THICK	48" X 144"	62.40 LBS
	48" X 96"	41.60 LBS
.125 THICK	48" X 144"	85.90 LBS
	48" X 120"	71.60 LBS
	48" X 96"	57.30 LBS
3/16" THICK	48" X 144"	131.00 LBS
	48" X 96"	87.30 LBS

## 5052 ALUMINUM PLATE

1/4" THICK	48" X 144"	168.00 LBS
3/8" THICK	48" X 144"	252.00 LBS
1/2" THICK	48" X 144"	335.20 LBS

PLEASE LET US KNOW IF YOU NEED A SIZE OTHER THAN LISTED ABOVE

PRODUCTS ARE SUBJECT TO AVAILABILITY OR SPECIAL ORDERING



# 6061 ALUMINUM



## 6061 ALUMINUM SHEET

THICKNESS	SIZE OF PLATE	APPROX. WEIGHT PER SHEET
.032 THICK	48" X 144"	22.80 LBS
.040 THICK	48" X 144"	28.50 LBS
.050 THICK	48" X 144"	35.40 LBS
.063 THICK	48" X 144"	44.20 LBS
.090 THICK	48" X 144"	62.90 LBS
.125 THICK	48" X 144"	86.90 LBS
3/16" THICK	48" X 144"	132.00 LBS

## 6061 ALUMINUM PLATE

1/4" THICK	48" X 144"	169.00 LBS
3/8" THICK	48" X 144"	254.00 LBS
1/2" THICK	48" X 144"	339.00 LBS
3/4" THICK	48" X 144"	509.00 LBS
1" THICK	48" X 144"	677.00 LBS
1-1/2" THICK	48" X 144"	1018.00 LBS
2" THICK	48" X 144"	1354.00 LBS

PLEASE LET US KNOW IF YOU NEED A SIZE OTHER THAN LISTED ABOVE

PRODUCTS ARE SUBJECT TO AVAILABILITY OR SPECIAL ORDERING



# 3003 TREAD-BRITE



## 3003 ALUMINUM DIAMOND TREAD PLATE

THICKNESS	SIZE OF PLATE	APPROX. WEIGHT PER SHEET
1/16" THICK	4' X 16' • (48" X 192")	64.50 LBS
• ALSO COMES IN 4' X 8' (48" X 96") SHEETS		
1/8" THICK	4' X 16' • (48" X 192")	123.00 LBS
• ALSO COMES IN 4' X 8' (48" X 96") SHEETS		
3/16" THICK	4' X 16' • (48" X 192")	180.50 LBS
• ALSO COMES IN 4' X 8' (48" X 96") SHEETS		

# 6061 ALUM. DIAMOND PLATE



THICKNESS	SIZE OF PLATE	APPROX. WEIGHT PER SHEET
1/8" THICK	4' X 16' • (48" X 192")	122.00 LBS
3/16" THICK	4' X 16' • (48" X 192")	179.00 LBS

PRODUCTS ARE SUBJECT TO AVAILABILITY OR SPECIAL ORDERING



# ALUMINUM TUBING

## ALUMINUM SQUARE TUBE

DIMENSIONS					LBS/FT	LBS/LENGTH
3/4	X	3/4	X	.065 .125	0.208 0.374	4.16 8.98
1	X	1	X	.065 .125	0.280 0.525	5.60 10.50
1-1/4	X	1-1/4	X	.125	0.676	13.52
1-1/2	X	1-1/2	X	.065 .125	0.428 0.826	8.56 16.52
2	X	2	X	.065 .125	0.580 1.126	11.60 22.52

## ALUMINUM RECTANGULAR TUBE

1/2	X	1	X	.065 .125	0.250 0.380	6.00 7.60
1	X	2	X	.065 .125	0.428 0.824	8.56 16.48
1	X	3	X	.125	1.126	22.52
1-1/2	X	2	X	.125	0.974	19.48
1-1/2	X	3	X	.125	1.275	25.50
2	X	3	X	.125	1.426	28.52
2	X	4	X	.125	1.726	34.52

## ALUMINUM ROUND TUBE

1/2	X	.065	.105	2.10
5/8	X	.065	.135	2.70
3/4	X	.065	.165	3.30
1	X	.065 .125	.225 .404	4.50 8.08
1-1/4	X	.065 .125	.288 .530	5.76 10.60
1-1/2	X	.065 .125 .188	.345 .648 .911	6.90 12.96 18.22
2	X	.065 .125	.465 .883	9.30 17.66

PRODUCTS ARE SUBJECT TO AVAILABILITY OR SPECIAL ORDERING





# ALUMINUM SHAPES

## ALUMINUM PIPE

DIMENSIONS		LBS/FT	LBS/LENGTH
1/2" PIPE	SCHEDULE 40	0.300	6.00
3/4" PIPE	SCHEDULE 40	0.391	7.82
1" PIPE	SCHEDULE 40	0.581	11.62
1-1/4" PIPE	SCHEDULE 40	0.786	15.72
1-1/2" PIPE	SCHEDULE 40	0.959	19.18
2" PIPE	SCHEDULE 40	1.289	25.78

## ALUMINUM CHANNEL

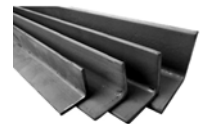
DIMENSIONS					LBS/FT	LBS/LENGTH (16')
1/2	X	1	X	1/8	.262	4.192
1	X	1	X	1/8	.413	6.608
1-1/2	X	1-1/2	X	1/8	.638	10.208
1	X	2	X	1/8	.577	9.232
3	X	1.41	X	.170	1.45	23.200
3	X	1.75	X	.170	1.63	26.080
4	X	1.58	X	.180	1.88	30.080
5	X	1.75	X	.190	2.38	38.080
6	X	1.92	X	.200	2.89	46.240

PLEASE LET US KNOW IF YOU NEED A SIZE OTHER THAN LISTED ABOVE

PRODUCTS ARE SUBJECT TO AVAILABILITY OR SPECIAL ORDERING



# ALUMINUM ANGLE



## 6061 ALUMINUM ANGLE • EQUAL LEGS

DIMENSIONS					LBS/FT	LBS/LENGTH (25')
1/2	X	1/2	X	1/16	.070	1.75
				1/8	.127	3.175
3/4	X	3/4	X	1/16	.108	2.70
				1/8	.206	5.15
1	X	1	X	1/16	.141	3.525
				1/8	.282	7.05
				3/16	.408	10.20
				1/4	.524	13.10
1-1/4	X	1-1/4	X	1/8	.350	8.75
				3/16	.515	12.875
				1/4	.668	16.70
1-1/2	X	1-1/2	X	1/8	.431	10.775
				3/16	.636	15.90
				1/4	.826	20.65
1-3/4	X	1-3/4	X	1/4	.960	24.00
2	X	2	X	1/8	.581	14.525
				3/16	.868	21.70
				1/4	1.133	28.325
				3/8	1.639	40.975
2-1/2	X	2-1/2	X	1/8	.750	18.75
				3/16	1.092	27.30
				1/4	1.433	35.825
				3/8	2.089	52.225
3	X	3	X	3/16	1.28	31.88
				1/4	1.717	42.925
				5/16	2.08	52.05
				3/8	2.252	63.125
4	X	4	X	1/4	2.329	58.225
				3/8	3.434	85.85
6	X	6	X	3/8	5.220	130.50

## 6061 ALUMINUM ANGLE • UNEQUAL LEGS

1	X	2	X	1/8	.418	10.45
1-1/2	X	2	X	1/8	.510	12.75
				3/16	.744	18.60
				1/4	.976	24.40
2	X	3	X	3/16	1.08	27.00
				1/4	1.43	35.75
				3/8	2.07	51.75
3	X	4	X	1/4	2.03	50.75

PLEASE LET US KNOW IF YOU NEED A SIZE OTHER THAN LISTED ABOVE

PRODUCTS ARE SUBJECT TO AVAILABILITY OR SPECIAL ORDERING



# ALUMINUM FLAT BAR



## 6061 • T6 ALUMINUM FLAT BAR

DIMENSIONS			LBS/FT	LBS/LENGTH (12')
1/8	X	1/2	.0750	0.900
	X	3/4	.113	1.344
	X	1	.150	1.800
	X	1-1/4	.187	2.240
	X	1-1/2	.226	2.712
	X	2	.300	3.600
	X	2-1/2	.376	4.512
	X	3	.450	5.400
	X	4	.600	7.200
3/16	X	1/2	.113	1.36
	X	3/4	.169	2.03
	X	1	.226	2.71
	X	1-1/4	.282	3.38
	X	1-1/2	.338	4.056
	X	2	.451	5.41
	X	2-1/2	.560	6.72
	X	3	.667	8.12
	X	4	.902	10.824
1/4	X	1/2	.150	1.80
	X	3/4	.224	2.688
	X	1	.300	3.60
	X	1-1/4	.374	4.50
	X	1-1/2	.450	5.40
	X	1-3/4	.526	6.31
	X	2	.600	7.20
	X	2-1/2	.750	9.00
	X	3	.900	10.80
	X	4	1.20	14.40
	X	5	1.496	17.952
	X	6	1.80	21.60
	X	12	3.60	43.00
5/16	X	1	.374	4.49
	X	2	.749	8.99
	X	3	1.101	13.212
3/8	X	1/2	.225	2.70
	X	3/4	.337	4.04
	X	1	.450	5.40
	X	1-1/4	.561	6.77
	X	1-1/2	.676	8.112
	X	2	.900	10.80
	X	2-1/2	1.126	13.51
	X	3	1.350	16.20
	X	4	1.800	21.60
	X	6	2.700	32.40

PLEASE LET US KNOW IF YOU NEED A SIZE OTHER THAN LISTED ABOVE

PRODUCTS ARE SUBJECT TO AVAILABILITY OR SPECIAL ORDERING



# ALUMINUM FLAT BAR



## 6061 • T6 ALUMINUM FLAT BAR

DIMENSIONS			LBS/FT	LBS/LENGTH (12')
1/2	X	5/8	.374	4.488
	X	3/4	.450	5.400
	X	1	.600	7.200
	X	1-1/4	.750	9.000
	X	1-1/2	.900	10.800
	X	1-3/4	1.05	12.600
	X	2	1.20	14.400
	X	2-1/2	1.50	18.000
	X	3	1.80	21.600
	X	3-1/2	2.10	25.200
	X	4	2.40	28.800
	X	5	3.00	35.976
	X	6	3.60	43.200
	X	8	4.80	57.600
5/8	X	3/4	.583	6.996
	X	1	.750	9.000
	X	1-1/2	1.124	13.490
	X	2	1.50	18.000
	X	2-1/2	1.875	22.500
	X	3	2.25	27.000
	X	4	3.00	36.000
3/4	X	1	.900	10.800
	X	1-1/2	1.35	16.200
	X	2	1.80	21.600
	X	2-1/2	2.25	27.000
	X	3	2.70	32.400
	X	4	3.60	43.200
	X	6	5.40	64.800
	X	8	7.20	86.400
1	X	1-1/2	1.80	21.600
	X	2	2.40	28.800
	X	3	3.60	43.200
	X	4	4.80	57.600
	X	5	6.00	72.000
	X	6	7.20	86.400
	X	8	9.408	115.20

PLEASE LET US KNOW IF YOU NEED A SIZE OTHER THAN LISTED ABOVE

PRODUCTS ARE SUBJECT TO AVAILABILITY OR SPECIAL ORDERING



# ALUMINUM SQUARE BAR

## 6061 ALUMINUM SQUARE BAR

DIMENSIONS	LBS/FT	LBS/LENGTH (12')
1/4" SQUARE	0.074	0.890
3/8" SQUARE	0.169	2.028
1/2" SQUARE	0.300	3.600
5/8" SQUARE	0.473	5.620
3/4" SQUARE	0.676	8.112
7/8" SQUARE	0.928	11.016
1" SQUARE	1.200	14.400
1-1/4" SQUARE	1.874	22.488
1-1/2" SQUARE	2.700	32.400
1-3/4" SQUARE	3.676	44.112
2" SQUARE	4.798	57.600

# ALUMINUM ROUND BAR

## 6061 ALUMINUM ROUND BAR

DIMENSIONS	LBS/FT	LBS/LENGTH (12')
1/8" ROUND	0.014	0.168
3/16" ROUND	0.032	0.384
1/4" ROUND	0.058	0.696
5/16" ROUND	0.093	1.116
3/8" ROUND	0.132	1.550
1/2" ROUND	0.235	2.760
5/8" ROUND	0.368	4.416
3/4" ROUND	0.530	6.200
7/8" ROUND	0.722	8.664
1" ROUND	0.942	11.060
1-1/8" ROUND	1.193	14.040
1-3/16" ROUND	1.330	15.960
1-1/4" ROUND	1.473	17.400
1-3/8" ROUND	1.782	21.000
1-1/2" ROUND	2.121	24.840
1-5/8" ROUND	2.489	29.868
1-3/4" ROUND	2.886	33.720
1-7/8" ROUND	3.313	39.756
2" ROUND	3.770	44.280
2-1/2" ROUND	5.891	68.900

PLEASE LET US KNOW IF YOU NEED A SIZE OTHER THAN LISTED ABOVE

PRODUCTS ARE SUBJECT TO AVAILABILITY OR SPECIAL ORDERING



# COLD ROLL FLAT BAR

## 1018 COLD ROLL FLAT BAR

DIMENSIONS		LBS/FT	LBS/LENGTH (12')
1/8" X 1/2"	X	.213	2.56
1/8" X 3/4"	X	.319	3.83
1/8" X 1"	X	.425	5.10
1/8" X 1-1/4"	X	.531	6.37
1/8" X 1-3/8"	X	.584	7.01
1/8" X 1-1/2"	X	.638	7.66
1/8" X 1-3/4"	X	.745	8.94
1/8" X 2"	X	.850	10.20
1/8" X 2-1/2"	X	1.063	12.76
1/8" X 3"	X	1.275	15.30
1/8" X 3-1/2"	X	1.488	17.86
1/8" X 4"	X	1.700	20.40
1/8" X 6"	X	2.550	30.60
3/16" X 1/2"	X	.319	3.83
3/16" X 5/8"	X	.398	4.78
3/16" X 3/4"	X	.479	5.75
3/16" X 1"	X	.638	7.66
3/16" X 1-1/4"	X	.798	9.58
3/16" X 1-1/2"	X	.956	11.47
3/16" X 1-3/4"	X	1.117	13.404
3/16" X 2"	X	1.275	15.30
3/16" X 2-1/2"	X	1.595	19.14
3/16" X 3"	X	1.913	22.96
3/16" X 4"	X	2.550	30.60
1/4" X 3/8"	X	.319	3.83
1/4" X 1/2"	X	.425	5.10
1/4" X 5/8"	X	.532	6.38
1/4" X 3/4"	X	.638	7.66
1/4" X 1"	X	.850	10.20
1/4" X 1-1/4"	X	1.063	12.76
1/4" X 1-1/2"	X	1.275	15.30
1/4" X 1-3/4"	X	1.489	17.87
1/4" X 2"	X	1.700	20.40
1/4" X 2-1/2"	X	2.127	25.52
1/4" X 3"	X	2.550	30.60
1/4" X 4"	X	3.403	40.84
5/16" X 1"	X	1.064	12.77
5/16" X 1-1/4"	X	1.329	15.95
5/16" X 1-1/2"	X	1.595	19.14
5/16" X 2"	X	2.127	25.52
5/16" X 4"	X	4.254	51.05

PLEASE LET US KNOW IF YOU NEED A SIZE OTHER THAN LISTED ABOVE

PRODUCTS ARE SUBJECT TO AVAILABILITY OR SPECIAL ORDERING



# COLD ROLL FLAT BAR



## 1018 COLD ROLL FLAT BAR

DIMENSIONS			LBS/FT	LBS/LENGTH (12')
3/8"	X	1/2"	.638	7.66
	X	3/4"	.957	11.48
	X	1"	1.276	15.31
	X	1-1/4"	1.595	19.14
	X	1-1/2"	1.914	22.97
	X	1-3/4"	2.231	26.77
	X	2"	2.552	30.62
	X	2-1/4"	2.871	34.45
	X	2-1/2"	3.191	38.29
	X	3"	3.829	45.95
	X	4"	5.105	61.26
1/2"	X	5/8"	1.064	12.77
	X	3/4"	1.276	15.31
	X	1"	1.702	20.42
	X	1-1/4"	2.127	25.52
	X	1-1/2"	2.552	30.62
	X	1-3/4"	2.978	35.74
	X	2"	3.403	40.84
	X	2-1/2"	4.250	51.00
	X	3"	5.105	61.26
	X	4"	6.806	81.67
5/8"	X	1"	2.127	25.52
	X	1-1/2"	3.191	38.29
	X	2"	4.254	51.05
3/4"	X	1"	2.550	30.60
	X	1-1/2"	3.829	45.95
	X	2"	5.105	61.26
1"	X	1-1/4"	4.254	51.05
	X	1-1/2"	5.105	61.26
	X	1-3/4"	5.956	71.47
	X	2"	6.803	81.67
	X	2-1/2"	8.508	102.10
	X	3"	10.21	122.52
	X	4"	13.61	163.32

PLEASE LET US KNOW IF YOU NEED A SIZE OTHER THAN LISTED ABOVE

PRODUCTS ARE SUBJECT TO AVAILABILITY OR SPECIAL ORDERING



# COLD ROLL SQUARE BAR



## 1018 COLD ROLL SQUARE BAR

DIMENSIONS	LBS/FT	LBS/LENGTH (12')
1/8" SQUARE	.0531	0.6372
3/16" SQUARE	.120	1.440
1/4" SQUARE	.213	2.556
5/16" SQUARE	.332	3.984
3/8" SQUARE	.479	5.748
7/16" SQUARE	.651	7.812
1/2" SQUARE	.851	10.212
9/16" SQUARE	1.077	12.924
5/8" SQUARE	1.329	15.945
11/16" SQUARE	1.609	19.308
3/4" SQUARE	1.914	22.970
13/16" SQUARE	2.247	26.964
7/8" SQUARE	2.606	31.272
15/16" SQUARE	2.991	35.892
1" SQUARE	3.403	40.836
1-1/16" SQUARE	3.842	46.104
1-1/8" SQUARE	4.307	51.684
1-3/16" SQUARE	4.799	57.588
1-1/4" SQUARE	5.318	63.816
1-3/8" SQUARE	6.434	77.208
1-1/2" SQUARE	7.657	91.884
1-5/8" SQUARE	8.987	107.84
1-3/4" SQUARE	10.42	125.04
1-7/8" SQUARE	11.96	143.52
2" SQUARE	13.61	163.32
2-1/2" SQUARE	21.27	255.24
3" SQUARE	30.63	367.56
4" SQUARE	54.45	652.40

PLEASE LET US KNOW IF YOU NEED A SIZE OTHER THAN LISTED ABOVE

PRODUCTS ARE SUBJECT TO AVAILABILITY OR SPECIAL ORDERING



# COLD ROLL ROUND BAR



## 1018 COLD ROLL ROUND BAR

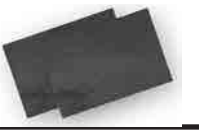
DIMENSIONS	LBS/FT	LBS/LENGTH
1/8" ROUND	.042	0.504 (12')
3/16" ROUND	.0940	1.128 (12')
1/4" ROUND	.1670	2.004 OR 3.340 (20')
5/16" ROUND	.2610	5.220
3/8" ROUND	.3759	7.518
7/16" ROUND	.5110	10.22
1/2" ROUND	.668	13.36
9/16" ROUND	.845	16.90
5/8" ROUND	1.044	20.88
11/16" ROUND	1.263	25.26
3/4" ROUND	1.502	30.04
13/16" ROUND	1.765	35.30
7/8" ROUND	2.044	40.88
15/16" ROUND	2.349	46.98
1" ROUND	2.67	53.40
1-1/16" ROUND	3.017	60.34
1-1/8" ROUND	3.379	67.58
1-3/16" ROUND	3.769	75.38
1-1/4" ROUND	4.176	83.52
1-5/16" ROUND	4.60	92.00
1-3/8" ROUND	5.049	100.98
1-7/16" ROUND	5.518	110.36
1-1/2" ROUND	6.014	120.28
1-5/8" ROUND	7.058	141.16
1-3/4" ROUND	8.186	163.72
1-15/16" ROUND	10.03	200.6
2" ROUND	10.69	213.8

PLEASE LET US KNOW IF YOU NEED A SIZE OTHER THAN LISTED ABOVE

PRODUCTS ARE SUBJECT TO AVAILABILITY OR SPECIAL ORDERING



# 304 • 2B STAINLESS STEEL SHEET



## TYPE 304 • FINISH # 2B

THICKNESS	SIZE OF PLATE	LBS/SQ FT	LBS/SHEET
7 GAUGE	48" X 120"	7.870	314.800
10 GAUGE	48" X 120"	5.670	226.800
11 GAUGE	48" X 120"	5.250	201.600
12 GAUGE	48" X 120"	4.410	176.400
13 GAUGE	48" X 120"	3.780	151.200
14 GAUGE	48" X 120"	3.150	126.000
16 GAUGE	48" X 120"	2.520	100.800
18 GAUGE	48" X 120"	2.016	80.600
20 GAUGE	48" X 120"	1.512	59.000
22 GAUGE	48" X 120"	1.260	50.400
24 GAUGE	48" X 120"	1.008	40.300

PLEASE LET US KNOW IF YOU NEED A SIZE OTHER THAN LISTED ABOVE

PRODUCTS ARE SUBJECT TO AVAILABILITY OR SPECIAL ORDERING





# STAINLESS STEEL FLAT BAR



## TYPE 304 • FINISH # 2B FLAT BAR

DIMENSIONS			LBS/FT	LBS/LENGTH
1/8"	X	1/2"	0.212	RANDOM
	X	3/4"	0.319	RANDOM
	X	1"	0.425	RANDOM
	X	1-1/4"	0.532	RANDOM
	X	1-1/2"	0.638	RANDOM
	X	2"	0.851	RANDOM
	X	2-1/2"	1.064	RANDOM
	X	3"	1.276	RANDOM
	X	4"	1.700	RANDOM
	X	5"	2.170	RANDOM
	X	6"	2.610	RANDOM
3/16"	X	1/2"	0.319	RANDOM
	X	3/4"	0.479	RANDOM
	X	1"	0.638	RANDOM
	X	1-1/4"	0.798	RANDOM
	X	1-1/2"	0.957	RANDOM
	X	2"	1.276	RANDOM
	X	2-1/2"	1.595	RANDOM
	X	3"	1.914	RANDOM
	X	4"	2.552	RANDOM
	X	6"	3.829	RANDOM
1/4"	X	1/2"	0.425	RANDOM
	X	3/4"	0.638	RANDOM
	X	1"	0.851	RANDOM
	X	1-1/4"	1.064	RANDOM
	X	1-1/2"	1.276	RANDOM
	X	2"	1.702	RANDOM
	X	2-1/2"	2.127	RANDOM
	X	3"	2.552	RANDOM
	X	4"	3.403	RANDOM
3/8"	X	1/2"	0.638	RANDOM
	X	3/4"	0.957	RANDOM
	X	1"	1.276	RANDOM
	X	1-1/2"	1.914	RANDOM
	X	2"	2.552	RANDOM
	X	3"	3.829	RANDOM
	X	4"	5.105	RANDOM
	X	6"	7.657	RANDOM
1/2"	X	3/4"	1.276	RANDOM
	X	1"	1.702	RANDOM
	X	1-1/4"	2.127	RANDOM
	X	1-1/2"	2.552	RANDOM
	X	2"	3.403	RANDOM
	X	4"	6.806	RANDOM
	X	6"	10.21	RANDOM

PLEASE NOTE: THIS MATERIAL COMES IN "12 FOOT RANDOM" LENGTHS  
USUALLY BETWEEN 10 & 13 FEET

PRODUCTS ARE SUBJECT TO AVAILABILITY OR SPECIAL ORDERING



# D.O.M ROUND TUBE



## DRAWN OVER MANDREL TUBE

DIMENSIONS			LBS/FT	LBS/LENGTH
5/8"	X	.120	0.647	RANDOM
3/4"	X	.120	0.807	RANDOM
1"	X	.120	1.128	RANDOM
	X	.188	1.630	RANDOM
	X	.250	1.935	RANDOM
1-1/4"	X	.090	1.172	RANDOM
	X	.120	1.448	RANDOM
	X	.188	2.132	RANDOM
	X	.250	2.670	RANDOM
1-1/2"	X	.090	1.426	RANDOM
	X	.120	1.769	RANDOM
	X	.188	2.635	RANDOM
	X	.219	2.996	RANDOM
	X	.250	3.338	RANDOM
1-5/8"	X	.120	1.930	RANDOM
1-3/4"	X	.090	1.679	RANDOM
	X	.120	2.089	RANDOM
2"	X	.090	1.933	RANDOM
	X	.120	2.409	RANDOM

PLEASE NOTE: THIS MATERIAL COMES IN "RANDOM" LENGTHS  
USUALLY BETWEEN 17 FEET UP TO 24 FEET • SOLD IN FULL LENGTHS ONLY

# CHROMOLY TUBE



## CHROMOLY 4130 TUBE • SOLD IN 18' LENGTHS ONLY

DIMENSIONS			LBS/FT	LBS/LENGTH
1"	X	.095	.9194	16.5492
1-1/4"	X	.095	1.173	21.114
	X	.120	1.451	26.118
1-1/2"	X	.120	1.771	31.878
1-3/4"	X	.095	1.680	30.240
	X	.120	2.093	37.674
2"	X	.120	2.412	43.416

PLEASE LET US KNOW IF YOU NEED A SIZE OTHER THAN LISTED ABOVE

PRODUCTS ARE SUBJECT TO AVAILABILITY OR SPECIAL ORDERING





# PATTON'S

METAL WORKING SOLUTIONS

STEEL CATALOGUE  
& BUYERS GUIDE

ONTARIO • SAN BERNARDINO • IRWINDALE • PALMDALE • HESPERIA • BURBANK • BAKERSFIELD

800.792.9762 • WWW.PATTONSCORP.COM

STEEL • PIPE • ALUMINUM • SHAPES • STRUCTURAL • ORNAMENTAL

## ONTARIO

PATTON'S  
558 EAST CALIFORNIA STREET  
909.988.6461  
800.792.9762  
FAX 909.395.9336  
HOURS M-F 7:30 TO 5 • SAT 8 TO 12  
ONTARIO@PATTONSCORP.COM

## IRWINDALE

ARROW PIPE & STEEL  
15563 EAST ARROW HWY  
626.338.8110  
800.600.PIPE  
FAX 626.960.3051  
HOURS M-F 7:30 TO 5 • SAT 8 TO 12  
IRWINDALE@PATTONSCORP.COM

## SAN BERNARDINO

PATTON'S  
1010 SOUTH ARROWHEAD  
909.884.8771  
800.877.4269  
FAX 909.889.8397  
HOURS M-F 7:30 TO 5 • SAT 8 TO 12  
SAN BERNARDINO@PATTONSCORP.COM

## BURBANK

QUEEN CITY STEEL  
2801 NORTH SAN FERNANDO BLVD  
818.846.3446  
800.400.3446  
FAX 818.954.0238  
HOURS M-F 7:30 TO 5 • SAT 8 TO 12  
BURBANK@PATTONSCORP.COM

## HESPERIA

PATTON'S  
17205 EUCALYPTUS, UNIT C11  
760.956.6446  
800.7.PATTON  
FAX 760.244.4901  
HOURS M-F 7:30 TO 4:30 • SAT 8 TO 12  
HESPERIA@PATTONSCORP.COM

## PALMDALE

PATTON'S  
630 ST. ANDREWS WAY  
661.942.2755  
866.939.0039  
FAX 661.723.9848  
HOURS M-F 7:30 TO 5 • SAT 8 TO 12  
PALMDALE@PATTONSCORP.COM

## BAKERSFIELD

PATTON'S  
4475 BUCK OWENS BLVD  
661.869.2996  
FAX 661.869.2999  
HOURS M-F 7:30 TO 5 • SAT 8 TO 12  
BAKERSFIELD@PATTONSCORP.COM

VOTED # 1 IN CUSTOMER SERVICE • WE WELCOME WALK-INS • OPEN TO THE PUBLIC  
VISIT US ONLINE FOR ONE HOUR STEEL QUOTES @ WWW.STEELQUOTES.PATTONSCORP.COM  
**SELECTION, AVAILABILITY, STRENGTH & RELIABILITY...**  
**WHEN YOU NEED IT. ONLY AT PATTON'S, SINCE 1959.**

WE PROVIDE SOLUTIONS TO THE NEEDS OF OUR CUSTOMERS • SINCE 1959

Our seven locations allow for immediate will-call services and in-stock materials.  
Our next day delivery services are second to none and available on almost any  
order placed in-store, via e-mail or over the phone.

Patton's delivers your material requests from over three million pounds of stocked in-house  
inventory in our 65,000 square foot distribution center in Ontario, California.  
Our stock includes an extensive selection of hot and cold rolled steel, carbon steel,  
galvanized materials, aluminum, stainless and much more...

